

IZA DP No. 8492

**Moral Hazard and Less Invasive Medical Treatment for  
Coronary Artery Disease: The Case of Cigarette Smoking**

Jesse Margolis  
Jason Hockenberry  
Michael Grossman  
Shin-Yi Chou

September 2014

# **Moral Hazard and Less Invasive Medical Treatment for Coronary Artery Disease: The Case of Cigarette Smoking**

**Jesse Margolis**

*CUNY Graduate Center*

**Jason Hockenberry**

*Emory University and NBER*

**Michael Grossman**

*CUNY Graduate Center, NBER and IZA*

**Shin-Yi Chou**

*Lehigh University and NBER*

Discussion Paper No. 8492  
September 2014

IZA

P.O. Box 7240  
53072 Bonn  
Germany

Phone: +49-228-3894-0

Fax: +49-228-3894-180

E-mail: [iza@iza.org](mailto:iza@iza.org)

Any opinions expressed here are those of the author(s) and not those of IZA. Research published in this series may include views on policy, but the institute itself takes no institutional policy positions. The IZA research network is committed to the IZA Guiding Principles of Research Integrity.

The Institute for the Study of Labor (IZA) in Bonn is a local and virtual international research center and a place of communication between science, politics and business. IZA is an independent nonprofit organization supported by Deutsche Post Foundation. The center is associated with the University of Bonn and offers a stimulating research environment through its international network, workshops and conferences, data service, project support, research visits and doctoral program. IZA engages in (i) original and internationally competitive research in all fields of labor economics, (ii) development of policy concepts, and (iii) dissemination of research results and concepts to the interested public.

IZA Discussion Papers often represent preliminary work and are circulated to encourage discussion. Citation of such a paper should account for its provisional character. A revised version may be available directly from the author.

## ABSTRACT

### **Moral Hazard and Less Invasive Medical Treatment for Coronary Artery Disease: The Case of Cigarette Smoking<sup>\*</sup>**

Comparisons of the effectiveness of two common procedures for Coronary Artery Disease: Percutaneous Coronary Intervention (PCI) and Coronary Artery Bypass Graft (CABG). Evidence indicates that CABG – the more invasive procedure – leads to superior long term outcomes for otherwise similar patients, though there is little consensus as to why. In this article, we propose a novel explanation: patient offsetting behavior. We hypothesize that patients who undergo the more invasive procedure, CABG, are more likely to improve their behavior – eating, exercise, smoking, and drinking – in a way that increases longevity. To test our hypothesis, we use Medicare records linked to the National Health Interview Survey to study one such behavior: smoking. We find that CABG patients are 12 percentage points more likely to quit smoking in the one-year period immediately surrounding their procedure than PCI patients, a result that is robust to alternative specifications.

#### HIGHLIGHTS

- Coronary Artery Disease accounts for one in seven deaths in the U.S.
- Bypass surgery leads to better long term outcomes than angioplasty.
- The former procedure is much more invasive than the latter.
- Patients who undergo bypass surgery may be more likely to change their behavior.
- They are 12 percentage points more likely to quit smoking following surgery.

JEL Classification: I10, I12

Keywords: coronary artery disease, moral hazard, smoking

Corresponding author:

Michael Grossman  
Ph.D. Program in Economics  
City University of New York Graduate Center  
365 Fifth Avenue, 5<sup>th</sup> Floor  
New York, NY, 10016-4309  
USA  
E-mail: [mgrossman@gc.cuny.edu](mailto:mgrossman@gc.cuny.edu)

---

<sup>\*</sup> Research for this paper was supported by grant number 5R21 AG033876 from the National Institute on Aging and the Office of Behavioral and Social Sciences Research to the National Bureau of Economic Research. This paper was presented at seminars at the University of Chicago, the University of Illinois at Chicago, Johns Hopkins University, the University of Melbourne, the Ohio State University, and the University of Connecticut. It also was presented at the 2013 Bureau of the Census Research Data Centers Conference at the Federal Reserve Bank of Atlanta, at the 2014 spring meeting of the National Bureau of Economic Research Health Economics Program, and at the Fifth Biennial Conference of the American Society of Health Economists at the University of Southern California in June 2014. We would like to thank the participants in those forums for helpful comments and suggestions. We also would like to thank Peter Cram and John O'Grady for their medical insights and Sandra Decker for her advice on working with the linked NHIS/Medicare data. We are indebted to Jonathan Fisher, Research Data Center (RDC) Administrator at the New York Bureau of the Census RDC at Baruch College, and Frances McCarty, Senior Service Fellow at the National Center for Health Statistics RDC, for their assistance in helping us to gain access to and work with restricted files from the National Health Interview Survey.

# **Moral Hazard and Less Invasive Medical Treatment for Coronary Artery Disease: The Case of Cigarette Smoking**

## **I. Introduction**

Coronary Artery Disease (CAD) is a common and deadly disease. In 2010, over 350,000 people died of CAD in the United States, making the disease responsible for roughly one in seven deaths (Murphy, Xu, and Kochanek, 2012). CAD is caused by a buildup of plaque on the arterial walls leading to the heart, resulting in reduced blood flow. If the buildup is not checked, CAD can result in an acute myocardial infarction (AMI, a.k.a. “heart attack”) due to insufficient oxygen reaching the heart.

A number of medical treatments are available to patients with CAD. First, and least invasive, is “medical management.” Medical management involves non-surgical treatment including prescription medication, lifestyle modification, and frequent monitoring. The second treatment is a revascularization procedure known as Percutaneous Coronary Intervention (PCI, commonly referred to as angioplasty). A doctor (usually an interventional cardiologist) performing PCI makes a small incision and arthroscopically inserts and inflates a balloon at the site of the lesion to expand the vessel. PCI in the modern era usually involves the placement of a wire mesh stent at the blockage site, which assists in keeping the arterial walls expanded to maintain blood flow. The PCI procedure takes approximately 60 minutes and the patient usually spends one night in the hospital.<sup>1</sup> The third and generally most invasive treatment is Coronary Artery Bypass Graft (CABG)<sup>2</sup>, a major surgical procedure that involves harvesting a section of vessel from a different area of the body (either vessels in the groin or chest wall), opening the

---

<sup>1</sup> [http://www.medicinenet.com/coronary\\_artery\\_bypass\\_graft/article.htm](http://www.medicinenet.com/coronary_artery_bypass_graft/article.htm) (accessed 5/31/12)

<sup>2</sup> Less invasive CABG procedures have been in development and increasing use in recent years, though these were very infrequent during the period we examine.

chest cavity via a sternectomy, and connecting one healthy part of the diseased artery to another, surgically bypassing the lesion. CABG surgery takes approximately four hours and patients generally spend at least a week recovering in the hospital.<sup>3</sup>

Of the two procedures, PCI is the more recent, having been initially used in the late 1970s, more than a decade after CABG was first performed. Its use expanded rapidly upon FDA approval of the coronary stent in 1994 (Cutler and Huckman, 2003). By 2010, the CDC estimated that there were 954,000 PCI procedures and 395,000 CABG procedures performed in the United States, with roughly half of them performed in patients over 65 (CDC, 2010).<sup>4</sup>

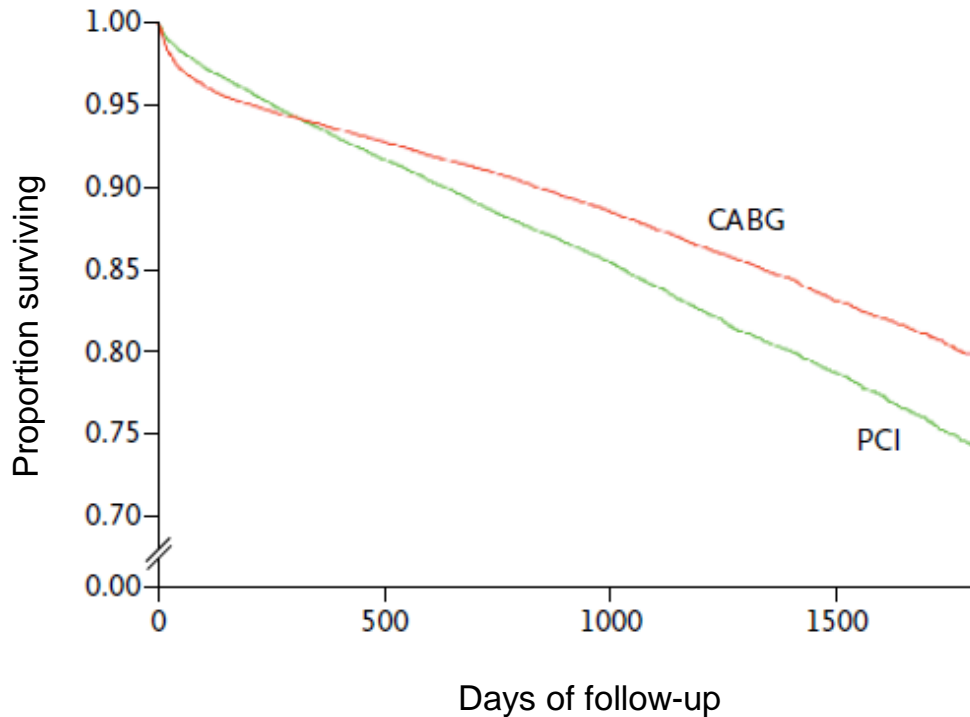
Since the development of PCI, there have been numerous studies comparing the effectiveness of the two procedures in various populations (see Hlatky et al., 2009, Weintraub et al., 2012, and Mohr et al., 2013 for three recent studies that summarize prior research). While the results vary, the emerging consensus is that CABG patients have worse short-run outcomes than similar PCI patients – partly due to higher perioperative mortality – but better long term outcomes. Results from a large observational study (Weintraub et al., 2012) are reproduced in Figure 1, showing that the survival curve for CABG patients is initially lower than for PCI patients, but that this trend is reversed a year or more after the procedure. A meta-analysis of ten randomized controlled trials shows a similar pattern (Hlatky et al., 2009).

---

<sup>3</sup> [http://www.medicinenet.com/coronary\\_angioplasty/article.htm](http://www.medicinenet.com/coronary_angioplasty/article.htm) (accessed 5/31/12)

<sup>4</sup> These counts are based on ICD-9-CM procedure codes beginning with 361 for CABG and 0066, 3606, and 3607 for PCI. Note that the PCI codes used by the CDC to estimate the number of procedures are slightly different than those we use to identify PCI patients in our main analysis.

Figure 1 – Comparative Effectiveness: PCI vs. CABG (Weintraub et al., 2012)



Source: Weintraub et al., 2012. N = 189,793. Figure adjusts based on inverse propensity score weighting.

While studies show that otherwise similar CABG patients have better long run outcomes than PCI patients, there is little consensus as to why.<sup>5</sup> In this paper, we propose a novel hypothesis: patient offsetting behavior. Specifically, a patient who undergoes CABG rather than PCI is more likely to change her behavior in a way that promotes good health and a longer life: she is more likely to quit smoking, begin exercising, improve her diet, and avoid excessive alcohol intake. This might happen because the more invasive nature of CABG – a patient’s heart and lungs are bypassed during the surgery, she is in the hospital for a week, has a longer post-

<sup>5</sup> Most authors either omit a discussion of mechanisms entirely (e.g. Weintraub et al., 2012) or imply that CABG may have mechanical benefits in the long run. For example, in commenting on the superiority of CABG in the recent SYNTAX randomized trial, Taggart (2013, p. 606) states that “... CABG and PCI achieve their benefits through quite different pathophysiological effects. Pathologically, most coronary artery disease is located in the proximal coronary arteries and bypass grafts to the mid-coronary vessels not only make the complexity of proximal disease irrelevant but also offer prophylaxis against the development of de-novo proximal disease. By contrast, although PCI can be highly effective in directly treating less complex proximal coronary artery disease, its benefits are mitigated by the development of new disease proximal to, within, or immediately distal to the stent...”

operative recovery period, and is left with a major scar and residual pain from the sternectomy – sends a stronger signal to the patient that she has a serious health problem.

This hypothesis is consistent with a prior economic research on moral hazard, showing that individuals change their behavior when their perceived risks change. Peltzman's (1975) study of the effects of automobile safety regulation is a classic and seminal example. He develops a model in which the legal mandate to install various safety devices on automobiles lowers the price of fast and reckless driving because it lowers the probability that the driver will die in an accident. Hence the demand for this activity rises. Empirically, he finds that the increase in this offsetting behavior (reckless driving) is so large that the regulations at issue had little impact on highway deaths and actually increased pedestrian deaths. More recently, Dave and Kaestner (2009) investigate the impact of health insurance access on health behaviors of the elderly, showing that access to Medicare at age 65 leads to a reduction in preventative behaviors and an increase in risky health behavior amongst the elderly. Peltzman (2011) demonstrates how medical technology breakthroughs can lead to offsetting behavior by showing that the age cohorts that benefited the most from the introduction of antibiotics experienced worse mortality rates from risky health behaviors. Kaestner, Darden, and Lakdawalla (2014) find that the use of statins leads to a small increase in body mass index and moderate (20–33%) increases in the probability of being obese, possibly because it changes the user's perceived risk of consuming high calorie fattening foods.

In this study, we test one potential behavioral response to surgery – smoking – and see results consistent with patient offsetting behavior. Patients who undergo CABG – the more invasive procedure – are 12 percentage points more likely to quit smoking than PCI patients.

Our results are robust to a number of different specifications, including a simple grouped-by-year regression using 11 observations, done in the spirit of Donald and Lang (2007).

## **II. Data**

We use individual Medicare data merged with responses from the National Health Interview Survey (NHIS). The Medicare records identify those patients who have been diagnosed with CAD and show which of them have undergone PCI or CABG, along with the exact date of each diagnoses and procedure. The Medicare data also allow us to control for disease severity and other conditions that might be correlated with procedure type and induce quitting, such as a myocardial infarction (a.k.a. “heart attack”). The NHIS provides information on smoking and quitting behavior, as well as individual characteristics.

The Medicare data are provided by the Center for Medicare and Medicaid Services (CMS). To identify CAD patients and the type of treatment they underwent, we use the Medicare Standard Analytical Files, including the Inpatient, Outpatient, Skilled Nursing Facility, Carrier, Durable Medical Equipment, Home Health Agency, and Hospice claims files. These files contain one or more records for each individual.<sup>6</sup> Each record contains the ICD-9-CM codes for all diagnoses made and procedures performed during that stay or claim. We identify CAD patients as those who have at least one diagnosis code beginning with 410, 411, 412, 413, or 414. We identify PCI patients as those CAD patients with at least one procedure code beginning with 0066, 3601, 3602, 3605, or 3606. We identify CABG patients as those CAD

---

<sup>6</sup> A single record in the Inpatient file corresponds to a stay in a hospital. A single record in the Skilled Nursing Facility file corresponds to a stay in a Skilled Nursing Facility. A single record in the Outpatient file corresponds to a claim by an institutional outpatient provider (Hospital outpatient clinic, rural health clinics, etc.). A single record in the Carrier claim file corresponds to a claim by a non-institutional outpatient provider (physicians, physician assistants, etc.)



patients with procedure codes beginning with 361.<sup>7</sup> Finally, we identify medically managed patients as those patients who have been diagnosed with CAD, but do not have a concurrent or subsequent PCI or CABG procedure.<sup>8</sup>

The NHIS is an annual survey of approximately 85,000 individuals in over 30,000 U.S. households run by the National Center for Health Statistics (NCHS), part of the Centers for Disease Control and Prevention (CDC). All participants are asked questions about their general state of health and disability. Each year, a subset of approximately 30,000 individuals is asked about their smoking habits. These respondents are asked if they have ever smoked 100 cigarettes in their life. For those who say yes, they are asked if they currently smoke every day, some days, or not at all. If they do not currently smoke, they are asked when they quit, a question they can answer in days, weeks, months, or years. We use the responses to these questions to create a synthetic panel, identifying whether a person smoked on each date prior to their NHIS interview. Each person is categorized as either an always smoker, a never smoker, or a quitter who smoked up to the day she reports quitting.<sup>9</sup>

The individual NHIS responses have been linked to Medicare data by the CDC and CMS and made available as a restricted-use dataset to researchers. The linkage is based on social security number, date of birth, and gender. To be linked, the data must match on all three fields. To date, the CDC and CMS have linked the 1994-1998 NHIS surveys to Medicare data from 1991-2007 and the 1999-2005 NHIS surveys to Medicare data from 1999-2007. The linkage is described further in the appendix.

---

<sup>7</sup> For both PCI and CABG, we exclude the small number of patients who do not have a concurrent or prior CAD diagnosis.

<sup>8</sup> A patient who is diagnosed with CAD before her NHIS interview date and has PCI or CABG after her NHIS interview date is counted as medically managed at the time of the NHIS interview..

<sup>9</sup> This categorization vastly over-simplifies the complexity of smoking and quitting behavior, but still allows us to investigate our key question: what is the *difference* in quitting behavior between CAD patients undergoing medical management, PCI, and CABG.

### III. Initial Analysis

In total, 12,265 NHIS respondents were linked to Medicare data and diagnosed with CAD.<sup>10</sup> Of these individuals, between the date of their diagnosis and the date of their NHIS interview, 10,713 patients were treated only with medical management, 771 patients underwent PCI but not CABG surgery, and 781 patients underwent CABG surgery.<sup>11</sup> Though our focus is on the two procedures – PCI and CABG – we include medically managed patients in all analyses for two reasons. First, due to the substantially greater number of medically managed patients, including them improves the precision of our covariate estimates (e.g. determining the impact of having a heart attack on smoking). Second, since medical management is the least invasive treatment for CAD, we might expect medically managed patients to quit at the lowest rate. This result, which we find in the data, supports our theory that changes in smoking behavior are related to treatment invasiveness. Our main finding, however – that CABG patients quit smoking at a higher rate than PCI patients – is robust to excluding medically managed patients from the analysis entirely.

---

<sup>10</sup> To be included, patients had to be diagnosed with CAD after the start of our Medicare data, but before the date of their NHIS interview (so that we have information on their smoking behavior both before and after their treatment).

<sup>11</sup> These counts are weighted by the NHIS probability weights. The unweighted totals are 10,772 medically managed patients, 723 PCI patients, and 770 CABG patients. Unweighted, 99 patients underwent both PCI and CABG surgery. These patients are included in the CABG category, because that is the more invasive treatment. Our results are robust to including them in the PCI category or excluding them altogether.

Table 1 – Characteristics by Treatment<sup>12</sup>

| Demographic Characteristics |        |     |      | Medical Conditions                                      |        |     |      |
|-----------------------------|--------|-----|------|---|--------|-----|------|
|                             | MM     | PCI | CABG |   | MM     | PCI | CABG |
| <i>Age</i>                  |        |     |      | <i>First AMI Within 6 Months of Treatment*</i>          |        |     |      |
| < 55                        | 4%     | 4%  | 2%   | Yes   | 8%     | 40% | 37%  |
| 55-64                       | 7%     | 8%  | 7%   | No  | 92%    | 60% | 63%  |
| 65-69                       | 24%    | 25% | 26%  | <i>% With Comorbidity Within 6 Months of Treatment*</i> |        |     |      |
| 70-74                       | 22%    | 25% | 26%  | Congestive heart failure                                | 14%    | 21% | 34%  |
| 75-79                       | 21%    | 20% | 23%  | Valvular disease  | 11%    | 19% | 27%  |
| 80-84                       | 13%    | 13% | 13%  | Pulmonary circulation disorder                          | 2%     | 4%  | 4%   |
| 85+                         | 8%     | 5%  | 2%   | Peripheral vascular disorder                            | 10%    | 18% | 22%  |
| <i>Gender</i>               |        |     |      | Paralysis   | 1%     | 1%  | 3%   |
| Male                        | 44%    | 53% | 59%  | Other neurological                                      | 3%     | 3%  | 3%   |
| Female                      | 56%    | 47% | 41%  | Chronic pulmonary disease                               | 15%    | 12% | 22%  |
| <i>Race</i>                 |        |     |      | Diabetes w/o chronic comp.                              | 14%    | 16% | 17%  |
| Asian                       | 1%     | 1%  | 1%   | Diabetes w/ chronic comp.                               | 4%     | 7%  | 10%  |
| Black                       | 9%     | 6%  | 4%   | Hypothyroidism  | 7%     | 6%  | 5%   |
| Hispanic                    | 5%     | 3%  | 4%   | Renal failure   | 2%     | 4%  | 4%   |
| White                       | 85%    | 89% | 90%  | Liver disease   | 1%     | 1%  | 0%   |
| Mult./Oth/Unknown           | 1%     | 1%  | 1%   | Chronic Peptic ulcer disease                            | 0%     | 1%  | 0%   |
| <i>Education</i>            |        |     |      | HIV and AIDS  | 0%     | 0%  | 0%   |
| Elem (K-8)                  | 21%    | 17% | 20%  | Lymphoma  | 0%     | 0%  | 0%   |
| HS (non-grad); GED          | 19%    | 23% | 18%  | Metastatic cancer                                       | 1%     | 1%  | 1%   |
| HS grad                     | 29%    | 30% | 29%  | Solid tumor without metastasis                          | 5%     | 5%  | 3%   |
| Some col; AA deg.           | 18%    | 20% | 18%  | Rheumatoid arthritis                                    | 3%     | 2%  | 2%   |
| BA degree                   | 7%     | 7%  | 8%   | Coagulation deficiency                                  | 3%     | 4%  | 9%   |
| Grad. Degree                | 5%     | 5%  | 6%   | Obesity   | 3%     | 8%  | 9%   |
| Unknown                     | 1%     | 0%  | 1%   | Weight loss   | 1%     | 1%  | 2%   |
| <i>Family Income</i>        |        |     |      | Fluid and electrolyte disorders                         | 10%    | 13% | 24%  |
| \$0 to \$9,999              | 19%    | 15% | 14%  | Blood loss anemia                                       | 1%     | 3%  | 3%   |
| \$10,000 to \$19,999        | 25%    | 22% | 24%  | Deficiency anemias                                      | 11%    | 14% | 23%  |
| \$20,000 to \$35,000        | 20%    | 24% | 24%  | Alcohol abuse   | 1%     | 1%  | 1%   |
| \$35,000 or over            | 18%    | 22% | 21%  | Drug abuse  | 0%     | 0%  | 0%   |
| Unknown                     | 18%    | 17% | 17%  | Psychoses   | 2%     | 2%  | 2%   |
|                             |        |     |      | Depression  | 4%     | 7%  | 6%   |
|                             |        |     |      | Hypertension  | 37%    | 37% | 36%  |
| <i>Count (N = 12,265)</i>   | 10,713 | 771 | 781  | <i>Count (N = 12,265)</i>                               | 10,713 | 771 | 781  |

Note: All data are weighted by the NHIS probability weights. Age is as of diagnosis (CAD) or procedure (PCI / CABG). Comorbidities based on Elixhauser et al. (1998). \* Within six months on either side of treatment (i.e. a one-year window).

Basic characteristics of the 12,265 CAD patients are shown in Table 1. Overall, when compared to patients undergoing medical management, patients who undergo a procedure (PCI

<sup>12</sup> Results presented in this paper include all Medicare participants, regardless of age. Results excluding those under 65, available upon request, are similar.

or CABG) are more likely to be younger, male, and white. PCI and CABG patients appear to have largely similar demographic characteristics, though CABG patients are somewhat more likely to be male. When comparing medical conditions, both PCI and CABG patients are substantially more likely than medically managed patients to have had their first Acute Myocardial Infarction (AMI, a.k.a. “heart attack”) within six months of initiating treatment. A number of other comorbidities – including congestive heart failure and valvular disease – show up most frequently in CABG patients, followed by PCI patients. In some of our regression specifications, we control for the covariates shown in Table 1.

Table 2 shows the smoking status of each group of respondents – medical management, PCI, and CABG – as of the date of the NHIS interview. Two items merit notice. First, CABG and PCI patients are more likely to have ever smoked than medically managed patients (i.e. the percentage of respondents who never smoked is lower for CABG and PCI patients). Second, most people who have ever smoked have quit smoking by the time of the NHIS interview, a trend that is most pronounced for CABG patients. While 61.0% of CABG patients in our study smoked at some point in their life, only 9.1% smoke as of their NHIS interview. PCI patients have a lower proportion of quitters, followed by medically managed patients.

Table 2 – Smoking Status as of NHIS Interview Date

| Smoking Status as of Survey | Treatment     |            |            | Total         |
|-----------------------------|---------------|------------|------------|---------------|
|                             | MM            | PCI        | CABG       |               |
| Current                     | 12.2%         | 11.3%      | 9.1%       | 11.9%         |
| Quit                        | 42.6%         | 49.3%      | 52.0%      | 43.6%         |
| Never Smoked                | 45.3%         | 39.5%      | 39.0%      | 44.5%         |
| Total                       | 100.0%        | 100.0%     | 100.0%     | 100.0%        |
| <i>Count</i>                | <i>10,713</i> | <i>771</i> | <i>781</i> | <i>12,265</i> |

Note: This table shows the smoking status of every NHIS respondent who was diagnosed with CAD prior to their interview date. Data are weighted by the NHIS probability weights.

The data in Table 2 are consistent with the broad hypothesis in our study – patients who undergo a more invasive treatment for CAD are more likely to quit smoking. However, they could also be consistent with a story in which people who undergo CABG are also more likely to quit smoking for reasons unrelated to their surgery. If our hypothesis is true, we should see that the differential quitting behavior between CABG, PCI, and medically managed patients is driven by quits that occur close to the date of the treatment.

Table 3 – Quitting Within Six Months of Treatment

|                                   | Treatment    |              |              | Total        |
|-----------------------------------|--------------|--------------|--------------|--------------|
|                                   | MM           | PCI          | CABG         |              |
| Smoke before treatment            | 15.7%        | 15.6%        | 15.1%        | 15.7%        |
| Smoke after treatment             | 14.2%        | 12.9%        | 10.5%        | 13.8%        |
| Percentage Point Change           | -1.6         | -2.7         | -4.5         | -1.9         |
| <i>Percent Change (Quit Rate)</i> | <i>10.1%</i> | <i>17.4%</i> | <i>30.1%</i> | <i>11.8%</i> |
| Count                             | 10,713       | 771          | 781          | 12,265       |

Note: This table includes every NHIS respondent who was diagnosed with CAD in our data prior to their interview date. It shows their smoking status exactly six months before and exactly six months after diagnosis (CAD) or surgery (PCI/CABG). Data are weighted by the NHIS probability weights.

Table 3 focuses on those quits that take place immediately around the initiation of treatment, where the initiation of treatment is defined to be the diagnosis date for medically managed patients and the procedure date for PCI and CABG patients. The “before” period is exactly six months before the treatment date, while the “after” period is exactly six months after treatment date.<sup>13</sup> Among the 10,713 patients diagnosed with CAD who receive only medical management, approximately 15.7% smoked six months before their diagnosis and 14.2% smoked

<sup>13</sup> Creating a “quit window” around the treatment is necessary for two reasons. First, it is unlikely that many individuals quit on exactly the day their treatment began. Second, our smoking data, which are based on individuals’ recollections, are insufficiently precise to pinpoint the exact day of quitting. Our conclusions do not change with other reasonable definitions of the quit window.

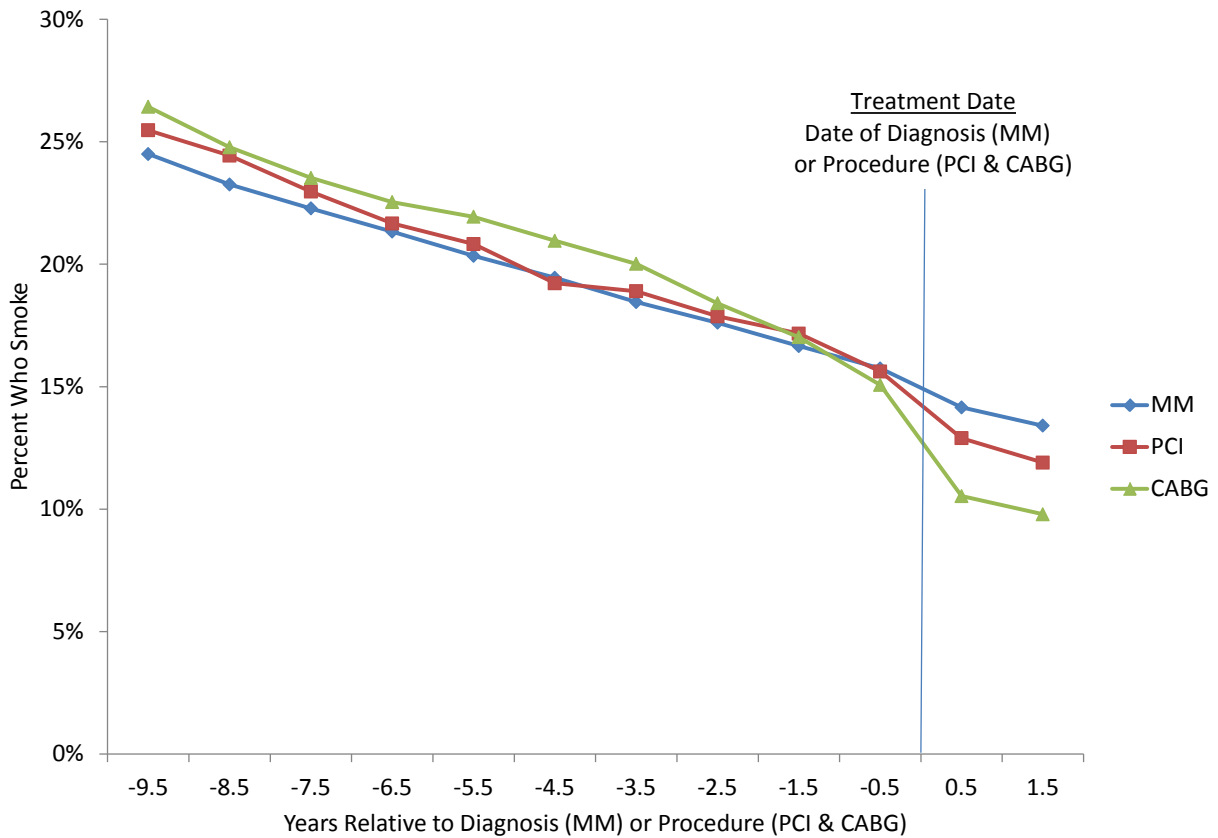
six months after their diagnosis. The quitters represent a 1.6 *percentage point* reduction in the number of smokers and a 10.1 *percent* reduction. The corresponding numbers for PCI are a 2.7 percentage point reduction and a 17.4 percent reduction. For CABG, they are a 4.5 percentage point reduction and a 30.1 percent reduction.

Further evidence is provided by Figures 2 and 3. In Figure 2, we calculate the percentage of the population smoking at twelve points in time, measured in years relative to the date of diagnosis (in the case of medically managed patients) or procedure (in the case of PCI and CABG patients).<sup>14</sup> In the CABG series, for example, the year -3.5 shows the percentage of CABG patients who were smoking exactly three and a half years prior to their procedure date. In the 10 years prior to the treatment date, the three series track each other reasonably closely. At the first point on the graph – 9.5 years before treatment – CABG patients were roughly one percentage point more likely than PCI patients to smoke, who were, in turn, roughly one percentage point more likely than MM patients to smoke. In the period immediately prior to treatment, the three groups smoked at roughly equal rates. The differences between the three series emerge most starkly in the period immediately after treatment initiation. Six months after their treatment begins, CABG patients were substantially less likely to smoke than either PCI or MM patients.

---

<sup>14</sup> Because we have data on only the most recent quit date for each individual, we assume that each smoker was smoking in all years before their quit date. Since we are using Medicare data for our analysis, most people are over 65 when they received their diagnosis or procedure, and it is unlikely that they started smoking for the first time in the ten years immediately prior. It is possible that individuals quit and restarted during this time period, and we do not distinguish them from continuous smokers.

Figure 2 – Smoking Rate by Year Relative to Diagnosis (MM) or Procedure (PCI & CABG)

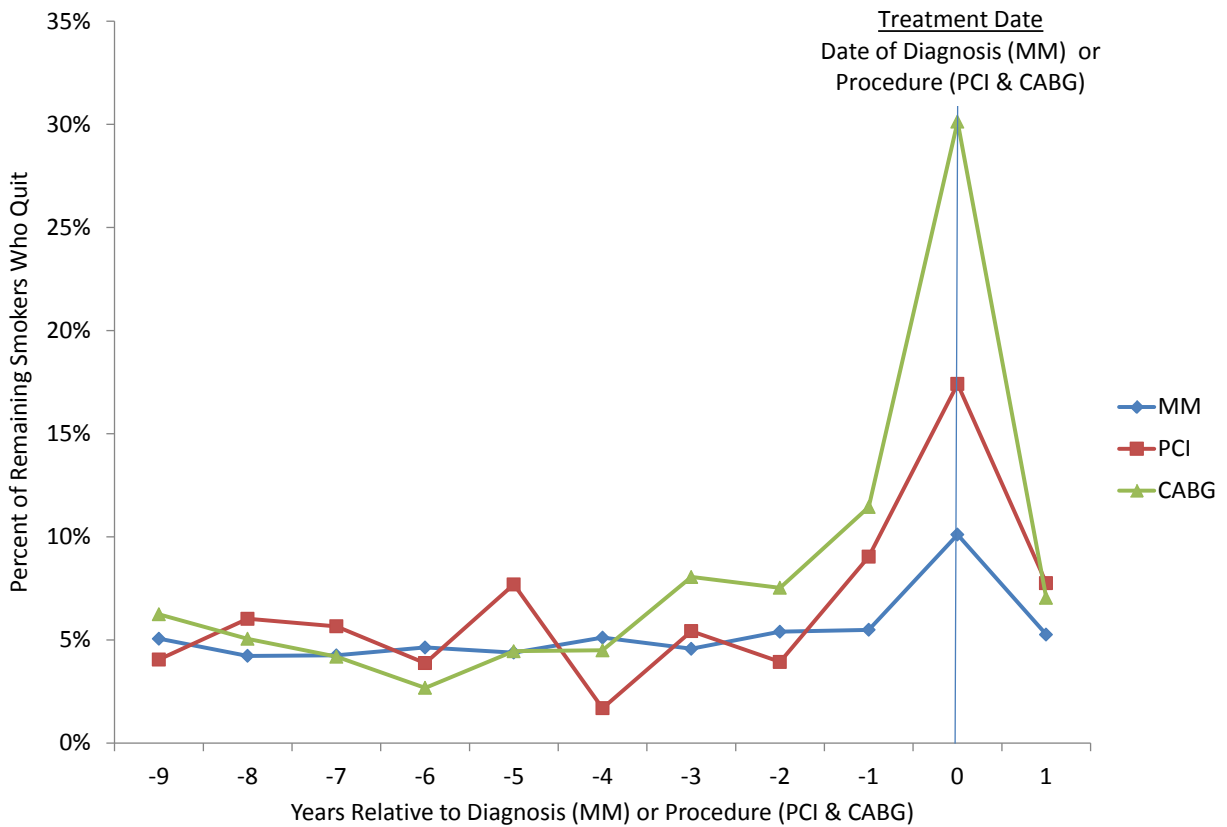


Note: Figure shows the percentage of respondents who smoked at each point relative to their diagnosis/procedure. Weighted by NHIS probability weights

Figure 3 displays the same data in a different format, showing the annual quit rate for patients in each of the three groups relative to the date of treatment. For the group that receives only medical management, roughly 5% of smokers quit each year in the nine years prior to being diagnosed, a rate that doubled to 10% during the year of their diagnosis with coronary artery disease. The PCI and CABG series show a similar trend, though they represent fewer individuals and are somewhat noisier. In the years prior to their procedure, roughly 5% of smokers quit each year, though this percentage began to rise the year before the procedure date. During the procedure year – defined to be the six month window on either side of the procedure date – the quit rate jumped to 17% for patients receiving PCI and 30% for patients receiving

CABG. In the year following treatment, the quit rate for all three groups dropped back to approximately 5%. Figures 2 and 3 provide reasonably compelling evidence that at least a portion of the increased quit rate for more invasive treatments observed in Table 2 is related to treatment received, and not simply a spurious correlation.

Figure 3 – Quit Rate by Year Relative to Diagnosis (MM) or Procedure (PCI & CABG)



Note: figure shows the % of remaining smokers who quit at each point relative to their diagnosis/procedure. Weighted by the NHIS probability weights

#### IV. Results

To further explore the relationship between treatment for coronary artery disease and smoking behavior, we fit two related models of quitting smoking. The first is a discrete time linear probability hazard function with 11 periods: 9 before treatment and 2 after. We fit the



model using individual data, allowing us to control for time-varying events – like CAD diagnosis or a patient’s first AMI – that may occur prior to, concurrent with, or after a PCI or CABG procedure.<sup>15</sup> The second model is a multi-period quit function using grouped data, inspired by Donald and Lang (2007). In this model, we build a synthetic panel, grouping the individual data by period and treatment type into 33 cells (3 treatment types and 11 periods), and run difference-in-differences regressions with 11 data points.

Before presenting the results of these models, it is useful to point out the relationship between a smoking participation function and a quit function. As an identity<sup>16</sup>

$$\frac{s_t}{s_{t-1}} \equiv 1 - q_t, \quad (1)$$

where  $s_t$  and  $s_{t-1}$  are the smoking participation rates in periods  $t$  and  $t-1$ , respectively, and  $q_t$  is the quit rate in the window defined by periods  $t$  and  $t-1$ . All rates are defined as fractions and can be interpreted as probabilities at the individual level. Take natural logarithms of the identity to obtain

$$\ln \frac{s_t}{s_{t-1}} \equiv \ln(1 - q_t) \cong -q_t. \quad (2)$$

---

<sup>15</sup> In this study, CAD diagnosis cannot occur *after* a PCI or CABG procedure, since we delete any PCI or CABG patients who did not have a prior or concurrent CAD diagnosis in our data.

<sup>16</sup> Let  $S_t$  be the number of smokers in period  $t$ , and let  $S_{t-1}$  be the number of smokers in period  $t-1$ . Let  $Q_t$  be the number of quitters in period  $t$  (the number who smoke in period  $t-1$  but do not smoke in period  $t$ ). Assume as is the case in our data that there are no starters or re-starters. Then

$$S_t \equiv S_{t-1} - Q_t.$$

Divide both sides of the identity by  $N$ , the size of the population:

$$\frac{S_t}{N} \equiv \frac{S_{t-1}}{N} - \frac{Q_t}{S_{t-1}} \frac{S_{t-1}}{N}.$$

Solve the last identity for  $\frac{S_t}{\frac{S_{t-1}}{N}}$  to obtain equation (1).

The approximation in the last part of equation (2) is better for smaller values of  $q$  ( $q \leq 0.2$  is generally used as a rule of thumb). However, even for a quit rate as large as 0.3 (the largest rate in our data),  $\ln(1 - q) = -0.350$ , which is close to 0.3. Equation (2) indicates that a regression in which the first difference of the log of smoking participation is the dependent variable should have approximately the same coefficients with the signs reversed as one in which the quit rate is the dependent variable. It also suggests that it is useful to begin with a log smoking participation function to arrive at a specification of a quit function. In particular, if the log smoking participation function contains individual fixed effects, these effects are eliminated by taking first differences to obtain the quit function.

*Model 1: Discrete-time Linear Probability Hazard Model (Individual Data)*

To implement the first model, we develop a synthetic panel with 12 points in time, as shown in Figure 2. For CABG and PCI patients, there are 10 points in time prior to treatment (from 9.5 years before to 0.5 years before) and two points in time after treatment (0.5 years after and 1.5 years after). For medically managed (MM) patients, there are the same 10 points in time before diagnosis and the same two points in time after diagnosis. To focus on the key aspects of the model, we ignore the socioeconomic and demographic variables for the time being, assume a single Elixhauser comorbidity, and suppress the subscript  $i$  for an individual. Let  $f_g$  be a person-specific fixed effect. Let  $a_t$  be a dummy variable that equals 0 at each point in time before treatment for PCI or CABG and equals 1 at each point in time after treatment. Specifically,  $a_t$  equals 1 in periods 11 and 12. This variable is not relevant for MM patients (see below). Let  $d_t$  be a dummy variable that equals 0 at all points in time before diagnosis and equals 1 at all points in time after diagnosis. Let  $h_t$  be a dummy variable that equals zero before a patient's first AMI

(in our data) and equals 1 after a patient's first AMI. Finally, let  $e_t$  equal 0 before an Elixhauser comorbidity is reported and equals 1 thereafter.

The log smoking participation model for PCI and CABG patients ( $g = p$  or  $c$ )

$$\ln s_{gt} = f_g - \beta_g a_{gt} - \phi h_{gt} - \gamma e_{gt} - \alpha d_{gt} - \lambda t, \quad (3)$$

where we assume a linear trend in the absence of treatment. The model for MM patients is the same except that  $a_{mt}$  coincides with  $d_{mt}$ , so that we constrain  $\beta_m$  to equal zero. After pooling and taking first differences, one obtains

$$-(\ln s_t - \ln s_{t-1}) \cong q_t = \lambda + \alpha(d_t - d_{t-1}) + \beta_p p(a_t - a_{t-1}) + \beta_c c(a_t - a_{t-1}) + \phi(h_t - h_{t-1}) + \gamma(e_t - e_{t-1}). \quad (4)$$

Strictly speaking, time-invariant individual characteristics, such as formal schooling, can only be added to equation (4) by assuming that they interact with the linear trend in equation (3). Our results are not affected by allowing the trend to be nonlinear or by allowing individual characteristics to interact with the indicator for the period after treatment in addition to their interactions with a linear trend.

We fit equation (4) as a discrete time linear probability hazard model. We include only individuals who smoke at the first point in time for which we compute smoking participation (9.5 years before treatment or diagnosis), dropping everyone who never smoked or had previously quit. Each person is assigned a  $q_{it}$  variable that is equal to one in the period in which they quit and zero in all other periods. Individuals are deleted once they quit. The model in equation (4) has at most 11 observations per person corresponding to the 11 time periods in Figure 3.

Individuals who smoke in all periods are the censored observations. The first period is defined by the window starting 9.5 years before treatment and ending 8.5 years before treatment. The last period is the window from 0.5 years after treatment to 1.5 years after treatment. The key window is period 10 and spans the dates from half a year before treatment or diagnosis to half a year after. That is the only period in which  $a_t - a_{t-1}$  is equal to 1. Since there are repeat observations on all persons except those who quit in period 1, we cluster standard errors at the individual level. Standard errors that ignore clustering are, however, very similar to those that take account of it. This would be the case if the unspecified disturbance term in the log smoking participation function in equation (3) is a random walk. In that case, we eliminate serial correlation by taking first differences.

Results are shown in Table 4. Note that  $\Delta$ After stands for  $a_t - a_{t-1}$ ,  $\Delta$ Diagnosed stands for  $d_t - d_{t-1}$ , and  $\Delta$ AMI stands for  $h_t - h_{t-1}$  in the table. Column 1 shows the simplest specification, with controls only for diagnosis with CAD and treatment with either PCI or CABG. The  $\Delta$ Diagnosed indicator is equal to one in the period when MM patients, PCI patients, or CABG patients are diagnosed, whether the diagnosis occurs in the same period as the treatment or not.<sup>17</sup> Being diagnosed with CAD is associated with a 5.0 percentage point increase in the probability of quitting, on top of the typical yearly quit rate of 4.9 percent (reflected in the coefficient on the constant term). Being treated with PCI or CABG is associated with an incremental 9.0 or 22.5 percentage point increase in the quit rate, respectively. This assumes that diagnosis and treatment occur in the same period. If not, the diagnosis coefficient must be subtracted since  $\Delta$ Diagnosed equals zero for PCI and CABG patients diagnosed in a period prior to their treatment period but equals one for all MM patients. That results in a 4.0 percentage point

---

<sup>17</sup> In results not shown, we find no evidence of a *differential* diagnosis effect based on treatment received. Therefore, in all results shown, we assume that there is a single diagnosis effect that does not vary by treatment.

increase for PCI patients and a 17.5 percentage point increase for CABG patients. Since 40 percent of PCI patients and 43 percent of CABG patients are diagnosed before treatment, the average percentage point increases in the quit rates are 7.0 and 20.4, respectively.<sup>18</sup> Regardless of how these computations are made, the difference between the coefficients on PCI and CABG treatments is 13.5 percentage points and is significant at the  $\alpha = 0.05$  level.

Table 4 – Regression Results for Discrete Time Linear Probability Hazard Model

|                               | (1)                 | (2)                 | (3)                 | (4)                 | (5)                 |
|-------------------------------|---------------------|---------------------|---------------------|---------------------|---------------------|
| Constant                      | 0.049***<br>(0.001) | 0.049***<br>(0.001) | 0.047***<br>(0.001) | 0.046***<br>(0.011) | -0.050<br>(0.032)   |
| PCI * ΔAfter                  | 0.090**<br>(0.038)  | 0.054<br>(0.040)    | 0.034<br>(0.040)    | 0.033<br>(0.039)    | 0.026<br>(0.042)    |
| CABG * ΔAfter                 | 0.225***<br>(0.045) | 0.195***<br>(0.045) | 0.160***<br>(0.044) | 0.155***<br>(0.044) | 0.141***<br>(0.046) |
| ΔDiagnosed                    | 0.050***<br>(0.008) | 0.042***<br>(0.008) | 0.025***<br>(0.008) | 0.025***<br>(0.008) | 0.004<br>(0.026)    |
| ΔAMI                          |                     | 0.083***<br>(0.023) | 0.075***<br>(0.024) | 0.076***<br>(0.024) | 0.076***<br>(0.024) |
| CABG * ΔAfter - PCI * ΔAfter  | 0.135**             | 0.141**             | 0.126**             | 0.122**             | 0.115**             |
| Elixhauser                    |                     |                     | X                   | X                   | X                   |
| Demographics                  |                     |                     |                     | X                   | X                   |
| Year, Period, Age, Yrs Smoked |                     |                     |                     |                     | X                   |
| Observations                  | 26,658              | 26,658              | 26,658              | 26,658              | 26,658              |
| Individuals                   | 3,065               | 3,065               | 3,065               | 3,065               | 3,065               |

Robust standard errors, clustered at the individual level, in parentheses. Regressions are weighted by NHIS probability weights. ΔAMI is an indicator for a patient having her first AMI (in our data) in a particular period. Specifications 3 and 4 include 29 dummy variables indicating when the Elixhauser comorbidity conditions were first diagnosed (in our data). In specification 4, demographic controls include gender, race, education dummies, and income category dummies (including a dummy for missing income data). In specification 5, we also include year dummies, period dummies, age and age squared, and a variable indicating the number of years a person had been smoking as of the baseline period (9.5 years before treatment). "CABG \* ΔAfter - PCI \* ΔAfter" is the difference between the PCI \* ΔAfter and CABG \* ΔAfter coefficients. \* significant at the 0.10 level; \*\* significant at the 0.05 level; \*\*\* significant at the 0.01 level.

<sup>18</sup> For MM patients, the increase in the quit rate is 0.0501. Since 60 percent of PCI patients are diagnosed in the same period as treatment, the average predicted increase in the quit rate for these patients is  $0.0897 + 0.60 * 0.0501 = 0.1198$ . The difference between that increase and the increase for MM patients is 0.0697 or 7.0 percentage points. Since 57 percent of CABG patients are diagnosed in the same period as treatment, the average predicted increase is  $0.2250 + 0.57 * 0.0501 = 0.2536$ . The difference between that increase and the increase for MM patients is 0.2035 or 20.4 percentage points.

In columns 2-5 of Table 4, we add additional control variables that may be associated with both selection into treatment and the propensity to quit smoking. In column 2, we add a control for a patient's first AMI. In column 3, we further control for the Elixhauser comorbidity conditions. In column 4, we add controls for demographic characteristics. And, in column 5, we add controls for the period, the calendar year, an individual's age and age squared as of the treatment date, and the number of years she has smoked as of the baseline period (9.5 years prior to treatment). An AMI proves to be a strong predictor of quitting smoking, increasing the predicted probability of quitting by between 7.5 and 8.3 percentage points, depending on the specification. Moreover, once we add AMI, the estimated size of the PCI coefficient declines and is no longer statistically significant at conventional levels. In our final specification, we find that patients undergoing PCI are 2.6 percentage points more likely to quit smoking, though given the imprecision of our estimate, we cannot rule out the possibility of no association.<sup>19</sup> While the coefficient on CABG also declines, it remains large and strongly statistically significant, both in comparison to medically managed patients and PCI patients. In our fifth specification, undergoing CABG surgery in the same period in which CAD was diagnosed is associated with a roughly 14.1 percentage point increase in the probability of quitting smoking. The increased quit rate associated with CABG is substantially larger than the increase associated with less invasive treatments for CAD, and approximately twice the increase associated with an AMI. Moreover, in every specification, the difference between the CABG and PCI coefficients is consistently large – ranging from 0.115 to 0.141 – and significant at the 0.05 level.

---

<sup>19</sup> As discussed above, this estimate is for a PCI patient who was diagnosed and treated in the same period.

## *Model 2: Multi-Period Quit Model Using Grouped Data*

To illustrate that our results are not sensitive to a flexible specification of period effects and to account for clustering of disturbance terms by group and period at the individual level, we aggregate the data into 11 periods for each of the three groups of patients. There are 33 cells in the aggregate sample, corresponding to the 33 data points shown in Figure 3. We obtain two quit series. The first is unadjusted for covariates and is identical to the quit rates that appear in Figure 3. The second quit series adjusts for effects due to diagnosis, AMI, and Elixhauser comorbidities. It is obtained from the individual data by estimating a discrete time hazard function for the probability of quitting that includes 11 period dummies interacted with each of three treatment dummies (one for CABG, one for PCI, and one for MM), and the diagnosis, AMI, and Elixhauser variables defined in equation (4). The 33 coefficients associated with the period-treatment interactions are quit rates by group and period adjusted for the effects of the last three variables just mentioned.<sup>20</sup>

In the spirit of Donald and Lang (2007), we use this data to perform simple difference-in-differences regressions with 11 observations. To illustrate the model that we estimate, consider a log smoking participation function for two groups ( $g = c$  or  $p$ ,  $c = \text{CABG}$ ,  $p = \text{PCI}$ ):

$$\ln s_{gt} = \mu + \rho c + \beta c a_t + 11 \text{ period dummies} + \varepsilon_{gt}. \quad (5)$$

Here  $a_t$ , as defined in equation (3), is an indicator that equals 1 in each of the two periods after treatment and  $\varepsilon_{gt}$  is the error term. Take the difference between each group in a given period to

---

<sup>20</sup> We do not adjust for demographic and socioeconomic characteristics since the inclusion of these characteristics has a very minor impact on the adjusted quit rates.

eliminate the intercept ( $\mu$ ) and the period dummies. Then take first differences to eliminate the group effect ( $\rho$ ):

$$\ln s_{ct} - \ln s_{ct-1} - (\ln s_{pt} - \ln s_{pt-1}) \cong q_{ct} - q_{pt} = \beta(a_t - a_{t-1}) + \text{error}. \quad (6)$$

Equation (6) is a regression forced through the origin with 11 observations. The dependent variable is the difference between the quit rate of CABG patients and the quit rate of PCI patients in each period. The independent variable,  $(a_t - a_{t-1})$ , equals 1 in the window spanning the period from 6 months before treatment to six months after treatment (period 10) and equals 0 in each of the other 10 periods or quit windows.

This approach has a number of attractive features. First, aggregation accounts for clustering in the disturbance term in an individual-level log smoking participation or quit equation by group and period. Second, if the error term in equation (5) is a random walk, then serial correlation is eliminated once first differences are taken. Third, the regression specified by equation (6) implicitly controls for a full set of period effects. Finally, by focusing on the difference in the quit rates in each period, we are asking whether this difference during the treatment period is sufficiently unusual compared to past and future values that it is unlikely to have arisen by chance. If the quit rates in the two series normally track one another but do not during the treatment year, we would expect that there is something unusual about the treatment year. On the other hand, if the quit rates in the two series often diverge wildly, then a substantial divergence in the treatment year might simply be due to chance.

Six aggregate quit regressions are contained in Table 5. The three in the top row employ the unadjusted quit series, while the three in the bottom row employ the adjusted quit series. In



column 1, the dependent variable is the difference between the CABG and PCI quit rates; in column 2, it is the difference between the CABG and MM rates; and in column 3, it is the difference between the PCI and MM rates. Three separate regressions are obtained for each series because of evidence that the residual variance is not the same for each dependent variable.<sup>21</sup> To be consistent with the notation in Table 4, the variable  $a_t - a_{t-1}$  is termed  $\Delta\text{After}$  in the table.

Table 5 – Quit Rate Regression with Grouped Data

|  | (1)<br>CABG - PCI  | (2)<br>CABG - MM    | (3)<br>PCI - MM  |
|--|--------------------|---------------------|------------------|
| $\Delta\text{After}$<br>(no adjustments)   | 0.127**<br>(0.050) | 0.200***<br>(0.044) | 0.073<br>(0.047) |
| $\Delta\text{After}$<br>(with adjustments) | 0.120**<br>(0.052) | 0.142***<br>(0.042) | 0.022<br>(0.051) |
| N  | 11                 | 11                  | 11               |

Note: Each cell represents the coefficient on  $\Delta\text{After}$  from a separate regression, with the standard error in parentheses. The dependent variable is the quit rate for one group of patients minus the quit rate for another. The independent variable is a dummy for the treatment year ( $\Delta\text{After}$ ). In the top row, the quit rate is unadjusted. In the bottom row, the quit rate is adjusted for diagnosis, AMI, and Elixhauser comorbidities, based on an individual regression. All quit rates are calculated using the NHIS probability weights. Regressions are forced through the origin and weighted by the inverse of the square root of the variance of the difference between period-specific quit rates from individual level regressions with 33 group period interactions. \* significant at the 0.10 level; \*\* significant at the 0.05 level; \*\*\* significant at the 0.01 level.

<sup>21</sup> Consider the following two regressions

$$q_{pt} - q_{pt-1} - (q_m - q_{m,t-1}) = \beta_p(a_t - a_{t-1})$$

$$q_{ct} - q_{ct-1} - (q_{mt} - q_{m,t-1}) = \beta_c(a_t - a_{t-1}),$$

where m denotes medical management. Estimates of  $\beta_p$ ,  $\beta_c$ , and  $\beta_c - \beta_p$  could be obtained from a pooled regression of the form

$$q_{gt} - q_{gt-1} - (q_m - q_{m,t-1}) = \beta_c c(a_t - a_{t-1}) + \beta_p(1 - c)(a_t - a_{t-1}).$$

We do not follow that approach because the residual variance in the first regression is not equal to the corresponding variance in the second regression.

Focusing on the first column of Table 5, one sees that the difference between the CABG quit rate and the PCI quit rate in treatment period is between 12 and 13 percentage points, regardless of whether one uses the raw data or adjusts the quit rate for covariates. In the second column, we see that the difference in the quit rate between CABG and MM patients drops when one adjusts for covariates, but remains large (14.2 percentage points) and strongly statistically significant. In the final column, we see that while the unadjusted quit rate for PCI patients is 7.3 percentage points larger than for MM patients, once one adjusts for a patient's CAD diagnosis and other medical conditions, the difference between the two quit rates is substantially smaller and not statistically distinguishable from zero.

## **V. Potential Mechanisms**

In the analysis above, we demonstrate that CABG patients are substantially more likely to quit smoking than those who have less invasive treatment for CAD. When combined with other potential lifestyle modifications, this change in behavior may help explain why CABG patients experience better mortality and morbidity outcomes over the long term than otherwise similar PCI patients. This finding is consistent with a model in which patients undergoing CABG receive a stronger and more persistent signal about the severity of their disease, leading them to improve their behavior. However, other explanations are also possible.

One alternative explanation is that CABG patients quit because they are forced to go “cold turkey” during the length of their hospital stay. For the week that they are in a hospital, most CABG patients are presumably unable to smoke, potentially kick-starting the quitting process and making it easier for them to stay off cigarettes when discharged. PCI patients, by

contrast, typically spend a day or less in the hospital, which might account for their lower quit rate in the period surrounding their procedure.

To test this theory – and provide a falsification test for our main results – we study two common procedures that are unrelated to smoking but require relatively long hospital stays: total knee replacement and total hip replacement.<sup>22 23</sup> These procedures – taken together – were performed over one million times in 2010, with over 500,000 procedures taking place in patients 65 and older (CDC, 2010). These two surgeries – which involve replacing a knee or hip joint with a metal or plastic replica – are generally done to relieve arthritic pain, and patients spend at least three to four nights in the hospital recovering.<sup>24</sup> Smoking is largely unrelated to knee or hip pain and so undergoing knee or hip replacement surgery would be unlikely to convey any new information to a smoker about the value of quitting.

To test the impact of a long hospital stay on smoking, we identify total knee and total hip replacement patients using the same linked NHIS / Medicare data as in the main analysis. Figure 4 reproduces the CABG quit rate from Figure 3 and adds a series showing the quit rate for patients who undergo knee or hip replacements.<sup>25</sup> When we combine knee and hip replacement recipients, we have data on 155 patients who smoked nine and half years prior to their surgery, slightly below the 206 CABG smokers in our data. In the years prior to their procedure, the quit rate for knee/hip and CABG patients are fairly similar, with the knee/hip quit rate somewhat higher five to nine years prior to surgery and the CABG quit rate somewhat higher one to three years prior to surgery. However, while the quit rate for CABG patients jumps dramatically in the

---

<sup>22</sup> We use ICD-9-CM procedure code 81.51 for Total Hip Replacement and 81.54 for Total Knee Replacement

<sup>23</sup> Thanks to Isaac Sorkin, who suggested we find non-smoking related procedures to do this type of analysis.

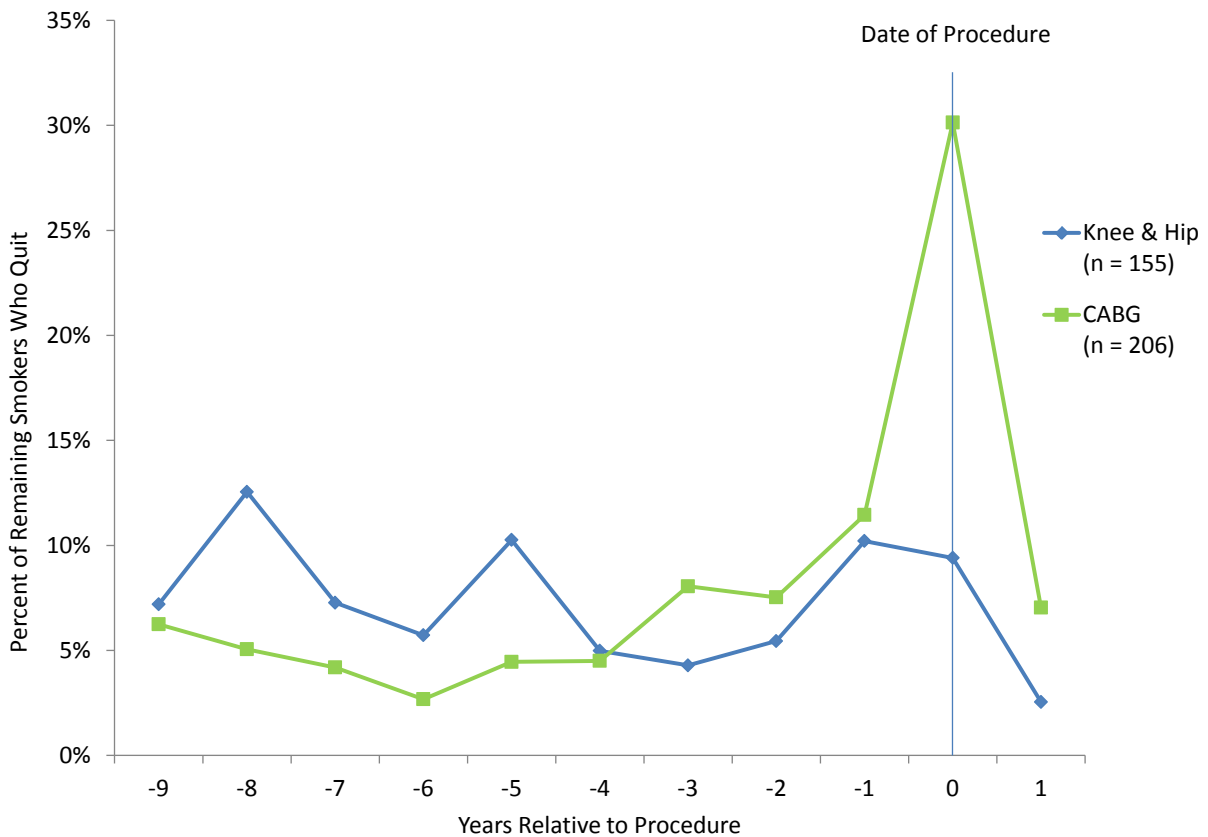
<sup>24</sup> <http://www.emoryhealthcare.org/orthopaedics/become-patient/faq/knee-replacement.html>;

[http://www.ucsfhealth.org/education/recovering\\_from\\_hip\\_replacement\\_surgery/](http://www.ucsfhealth.org/education/recovering_from_hip_replacement_surgery/)

<sup>25</sup> The small number of patients who have both knee and hip replacements are assigned a procedure date based on their total knee replacement.

one year window surrounding their procedure, we see no similar increase for knee/hip patients. Consistent with the visual evidence shown in Figure 4, regression results (not shown) show no significant relationship between total knee or hip replacement surgery and quitting. It appears unlikely that a substantial portion of the observed CABG impact on quitting is caused by going “cold turkey” during a patient’s hospital stay.

Figure 4 – Quit Rate by Year Relative to Diagnosis (MM) or Procedure (PCI & CABG)



Note: Figure shows the percentage of remaining smokers who quit at each point relative to their procedure. Weighted by NHIS probability weights

Alternatively, one might explain our main results by the doctor a patient sees. CABG procedures are performed by heart surgeons, while PCI procedures are performed by interventional cardiologists. If these two types of doctors systematically give different advice to

smokers on the importance of quitting, this might be the mechanism through which the CABG quit rate rises above the PCI quit rate near the treatment date. Though different than our main hypothesis – that CABG sends a stronger and more persistent signal to the patient about his or her health problems – this mechanism is similar. Rather than the scar on a CABG patient’s chest, it may be her heart surgeon who convinces her to quit smoking. Either way, the patient updates her opinion on the value of quitting smoking based on the CABG experience. And, while this alternative explanation – that heart surgeons are more persuasive smoking cessation advocates – seems less likely to us, it arguably provides more actionable policy recommendations.

## **VI. Conclusion**

Coronary Artery Disease is a frequently occurring and deadly disease. There are several common treatments – including medical management, PCI, and CABG – and each has benefits and costs associated with it. In this paper, we have examined one previously unexplored benefit of more invasive treatment: those who undergo a procedure, particularly the more invasive CABG surgery, are more likely to quit smoking. In our preferred regression model, we estimate that CAD patients who undergo CABG are 12 percentage points more likely to quit smoking in the one-year window surrounding their surgery than patients who undergo PCI. During the same one-year window, CABG patients are 14 percentage points more likely to quit smoking than medically managed patients. These results are robust to a number of alternative specifications.

While we do not have data on behaviors other than smoking, we suspect that patients undergoing more invasive surgery are also more likely to improve their diet, limit excessive consumption of alcohol, and (when recommended) exercise more. Taken together, these

behavioral responses may offset the inherent risks of a more invasive surgery and help explain why the longer term outcomes for CABG patients exceed those of similar patients receiving PCI. Our findings also highlight the importance of emphasizing healthier behaviors to those patients who have less invasive medical treatment.

## VII. References

CDC (2010). National Hospital Discharge Survey. <http://www.cdc.gov/nchs/fastats/inpatient-surgery.htm> (accessed on 6/6/14).

Cutler, David M. and Robert S. Huckman (2003). “Technological development and medical productivity: the diffusion of angioplasty in New York State.” *Journal of Health Economics* 22 (2): 187-217.

Dave, Dhaval M. and Robert Kaestner (2009). “Health Insurance and Ex Ante Moral Hazard: Evidence from Medicare.” *International Journal of Health Care Finance and Economics* 9 (4): 367-390.

Donald, Stephen G. and Kevin Lang (2007). “Inference with Difference-in-Differences and Other Panel Data.” *The Review of Economics and Statistics* 89 (2): 221–233.

Elixhauser, Anne, Steiner, Claudia, Harris, D. Robert Harris and Rosanna M. Coffey (1998). “Comorbidity Measures for Use with Administrative Data.” *Med Care* 36(1): 8-27.

Hlatky, Mark A., Boothroyd, Derek B., Bravata, Dena M., et al. (2009). “Coronary artery bypass surgery compared with percutaneous coronary interventions for multivessel disease: a collaborative analysis of individual patient data from ten randomised trials.” *Lancet* 373(9670): 1190–97.

Kaestner, Robert, Darden, Michael and Darius Lakdawalla (2014). “Are investments in disease prevention complements? The case of statins and health behaviors.” *Journal of Health Economics* 36 (July): 151-163.

Mohr, Friedrich W., Morice, Marie-Claude, Kappetein, A. Pieter et al., (2013). “Coronary artery bypass graft surgery versus percutaneous coronary intervention in patients with three-vessel disease and left main coronary disease: 5-year follow-up of the randomised, clinical SYNTAX trial.” *Lancet* 38(9867): 629–38.

Murphy, Sherry L., Xu, Jiaquan and Kenneth D. Kochanek. “Deaths: Preliminary Data for 2010.” *National Vital Statistics Reports*; vol 60 no 4. Hyattsville, MD: National Center for Health Statistics. 2012.

Peltzman, Sam. (1975). “The Effects of Automobile Safety Regulation.” *Journal of Political Economy* 83(4): 677-725.

Peltzman, Sam. (2011). “Offsetting Behavior, Medical Breakthroughs, and Breakdowns.” *Journal of Human Capital* 5(3): 302-341.

Taggart, David P. (2013). “CABG or stents in coronary artery disease: end of the debate?”  
*Lancet* 381(9867): 605–07.

Weintraub, William S., Maria V. Grau-Sepulveda, Jocelyn M. Weiss, et al. (2012).  
“Comparative Effectiveness of Revascularization Strategies.” *New England Journal of Medicine*  
366(16): 1467-76.



## Appendix – NHIS / Medicare Data Linkage

|                       | 1991 | 1992 | 1993 | 1994 | 1995 | 1996 | 1997 | 1998 | 1999 | 2000 | 2001 | 2002 | 2003 | 2004 | 2005 | 2006 | 2007 |
|-----------------------|------|------|------|------|------|------|------|------|------|------|------|------|------|------|------|------|------|
| <b>NHIS 1994-1998</b> |      |      |      |      |      |      |      |      |      |      |      |      |      |      |      |      |      |
| NHIS                  |      |      |      | 1994 | 1995 | 1996 | 1997 | 1998 |      |      |      |      |      |      |      |      |      |
| Medicare              | 1991 | 1992 | 1993 | 1994 | 1995 | 1996 | 1997 | 1998 |      |      |      |      |      |      |      |      |      |
| <b>NHIS 1999-2005</b> |      |      |      |      |      |      |      |      |      |      |      |      |      |      |      |      |      |
| NHIS                  |      |      |      |      |      |      |      |      | 1999 | 2000 | 2001 | 2002 | 2003 | 2004 | 2005 |      |      |
| Medicare              |      |      |      |      |      |      |      |      | 1999 | 2000 | 2001 | 2002 | 2003 | 2004 | 2005 |      |      |

Note: the Medicare years labeled on the chart are potentially useful for our study because they represent a Medicare record that is linked to a later NHIS interviews. Medicare records linked to earlier NHIS interviews provide no information on quitting behavior after CAD treatment.

For those respondents who were diagnosed with CAD prior to their NHIS interview date, we have the ability to look at their smoking behavior before and after their diagnosis. For the subset of CAD patients who underwent PCI or CABG, we can also look at their smoking behavior before and after their procedure. For example, for individuals interviewed in 1994 who had PCI, we can look at their smoking behavior before and after their procedure *only if they underwent PCI between 1991 and 1994* (and within 1994, only if their procedure was before the date of the NHIS interview). If a person had PCI before 1991, then we have no record of their procedure. If a person had PCI after 1994, then we have no record of their smoking behavior *after* their procedure.

Each person in the linked dataset, therefore, has a “diagnosis window” within which they must be diagnosed with CAD to be included in our study. The longest window is for a person who was interviewed in 1998 – she will be included if she was enrolled in Medicare and diagnosed with CAD between 1991 and 1998 (prior to the interview date). The shortest window is for a person who was interviewed in early 1999 – she will be included only if she was enrolled in Medicare and diagnosed with CAD on an earlier date in 1999 than the date of her interview.